



# Cable Tray Systems



## FACTORY ADDRESS

Taltoli, Telihati, Sreepur,  
Gazipur-1740, Bangladesh.



## HEAD OFFICE ADDRESS

House#9/5, Lane-1, Block-B, Section-6,  
Mirpur, Dhaka-1216, Bangladesh.  
sales01@powerbreezxbd.com

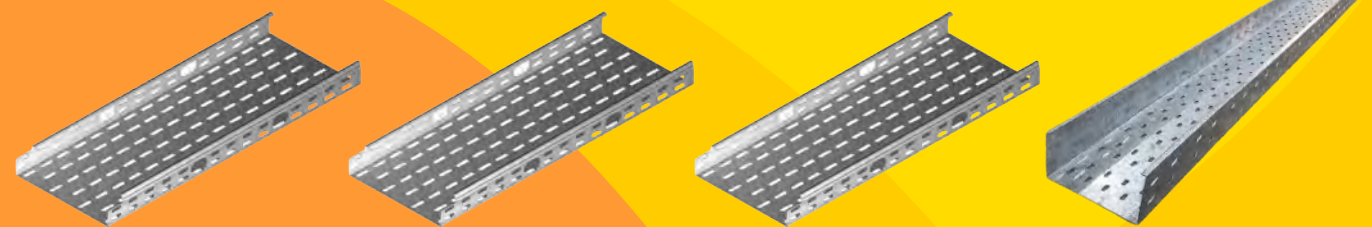


## CHATTOGRAM ADDRESS

Flat#3C, SB Tower, House#10, Lane#4,  
Block#G, Halishahar H/E, Chattogram, Bangladesh.  
Phone: 01713159042  
Email: sales01@powerbreezxbd.com



09617171444  
01713158953



[www.powerbreezxbd.com](http://www.powerbreezxbd.com)



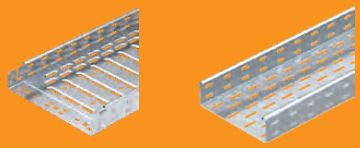
An ISO 9001 : 2015 Certified Company



## Perforated Tray

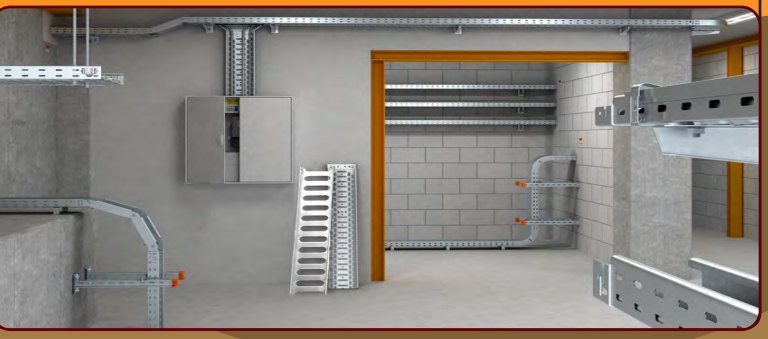
**Dimensions:**  
 Heights : 35 mm, 50 mm, 75 mm, 100 mm, 125 mm, 150 mm.  
 Widths : 50 mm, 75 mm, 100 mm, 125 mm, 150 mm, 200 mm,  
 250 mm, 300 mm, 400 mm, 450 mm, 500 mm, 600 mm.  
 Lengths : 8' (2.4m).  
 Thickness: 1.2 mm to 2.5 mm.

**Finishes/Material:**  
 Strip Galvanized (Mill Galvanized).  
 Hot-Dipped Galvanized.  
 Powder Coated.



**Features:**  
 All cable trays are chemically treated through Eight stage treatment procedure.  
 Different side rail designs for light, heavy duty and wide span applications.  
 Performance is done with CNC laser with zero slump edge.

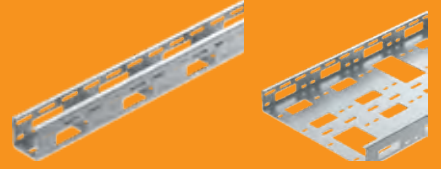
**Accessories:**  
 Complete line of bends, T's, intersections, dividers, covers, connectors and blind ends.



## Channel Tray

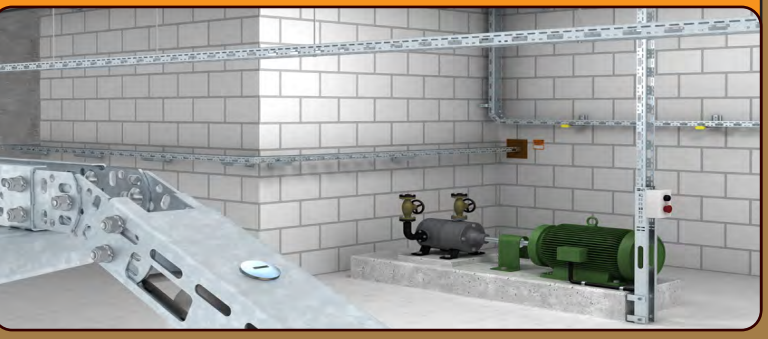
**Dimensions:**  
 Heights : 25 mm, 35 mm, 50 mm.  
 Widths : 50 mm, 60 mm, 75 mm, 100 mm.  
 Lengths : 8' (2.4m).  
 Thickness: 0.8 mm to 1.2 mm.

**Finishes/Material:**  
 Pre-Galvanized  
 Hot-Dipped Galvanized  
 Powder Coated



**Features:**  
 All cable trays are chemically treated through Eight stage treatment procedure.  
 Different side rail designs for light, heavy duty and wide span applications.  
 Performance is done with CNC laser with zero slump edge.

**Accessories:**  
 Grommets, covers and connectors. Bends for select sizes.



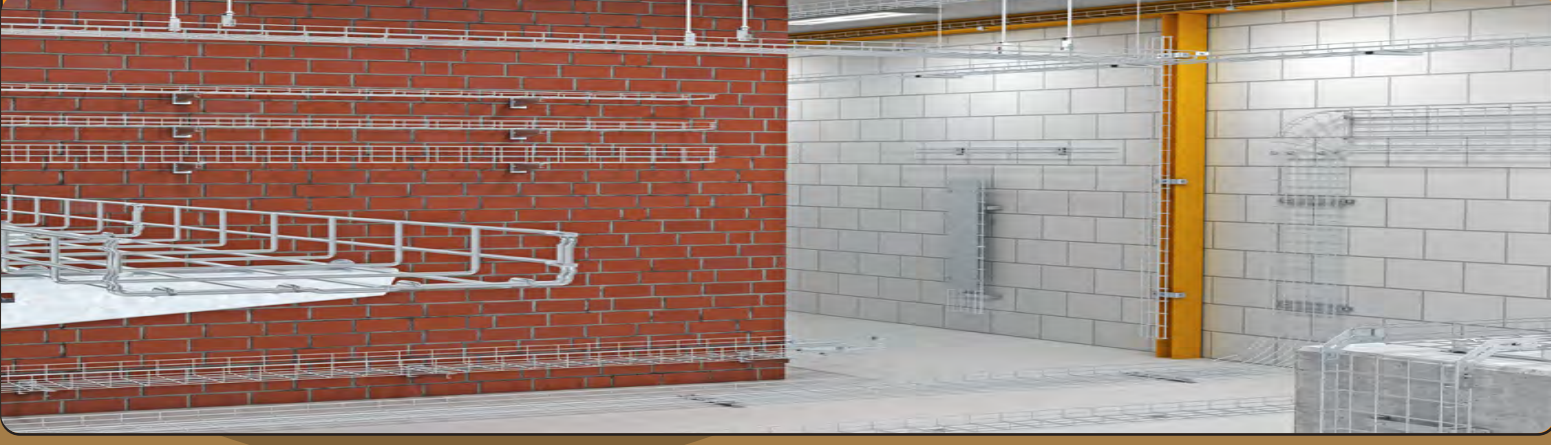
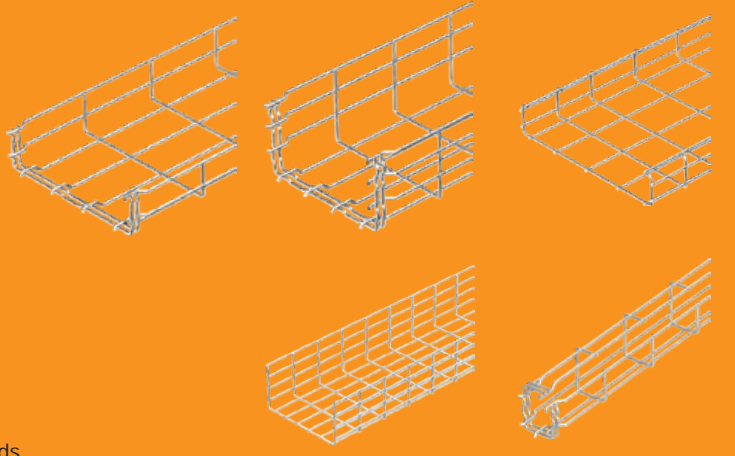
## Wire Mesh Tray

**Dimensions:**  
 Heights : 50 mm, 75 mm, 100 mm, 150 mm.  
 Widths : 50 mm, 100 mm, 150 mm, 200 mm, 300 mm, 400 mm, 600 mm.  
 Lengths : 10' (3m).  
 Thickness: 5 mm.

**Finishes:**  
 Electro-Galvanized  
 Hot-Dipped Galvanized  
 Stainless Steel 304  
 Stainless Steel 316

**Features:**  
 Light Weight, easy to install and modify in the field.

**Accessories:**  
 Complete line of bends, T's, intersections, dividers, covers, connectors and blind ends.



## Walkable Tray

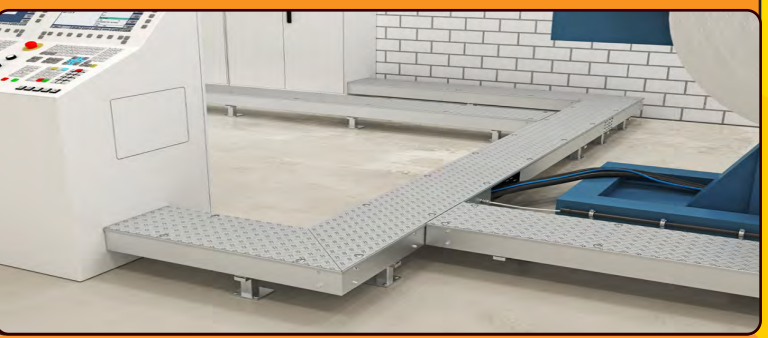
**Dimensions:**  
 Heights : 100mm, 110mm.  
 Widths : 200mm, 300mm, 400mm, 500mm, 600mm.  
 Length : 8' (2.4m).  
 Thickness: 2mm to 4mm.

**Finishes/Material:**  
 Strip Galvanized (Mill Galvanized).  
 Powder Coated.  
 Hot-Dipped Galvanized.



**Features:**  
 Tray and cover system designed to support heavy loads, stamping feet and more.

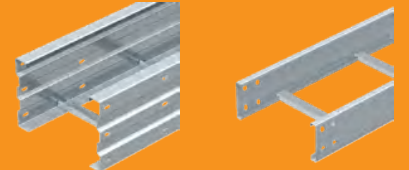
**Accessories:**  
 Floor mount supports, connectors, dividers and dust protection.



## Ladder Tray

**Dimensions:**  
 Heights : 50 mm, 75 mm, 100 mm, 125 mm, 150 mm, 200 mm.  
 Widths : 150 mm, 200 mm, 300 mm, 400 mm, 450 mm,  
 500 mm, 600 mm, 800 mm, 1000 mm.  
 Lengths : 8' (2.4m).  
 Thickness: 1.2 mm to 2.5 mm.

**Finishes/Material:**  
 Pre-Galvanized.  
 Hot-Dipped Galvanized.  
 Powder Coated.



**Features:**  
 All cable trays are chemically treated through Eight stage treatment procedure.  
 Different side rail designs for light, heavy duty and wide span applications.  
 Performance is done with CNC laser with zero slump edge.

**Accessories:**  
 Complete line of bends, T's, intersections, dividers, covers, connectors and blind ends.



## Facilities available for Cable Tray

- Power press for punching of capsule hole.
- Hydraulic press brake for bending of tray.
- Guillotine shear machine for cutting the sheet.
- CNC laser cutting for cutting capsule and different shapes of hole.
- Profile bending machine for producing the fittings such as elbows, bends, T's.
- Spot welding machine for producing the fittings.
- Iron worker for notching the corner.
- 8 stage chemical treatment plant for removing all dust, grease, oil and phosphating the M.S sheet.
- Powder coating plant for painting the tray.



CNC Laser Cutting Machine



Durma Cutting Machine



Banding Machine